

Pro Series Zoning Panels

2 and 3-Zone Panels with Automatic Bypass Control

For Gas/Electric and Heat Pump Equipment

eControls

Contractor Sell Sheet



These panels automatically control bypass using the non-calling modulating zone damper or an external modulating bypass damper and eliminate installation of pressure sensors, bypass eliminator controls or special bypass dampers. The modulating dampers are accurately and automatically positioned by the panel for the correct bypass airflow.

- ▶ Automatic bypass control eliminates the contractor having to set and test bypass operation.
- ▶ On-panel display for entering settings and monitoring operation.
- ▶ Push-in terminals and plug&play dampers speed up installation and reduce wiring errors.
- ▶ Superior actuator with twice the torque and 4 times the operating life of a spring return actuator.
- ▶ Rapidly clone panels in the shop to eliminate field programming and errors.
- ▶ A2L Leak detection input.

Pat. Pend.



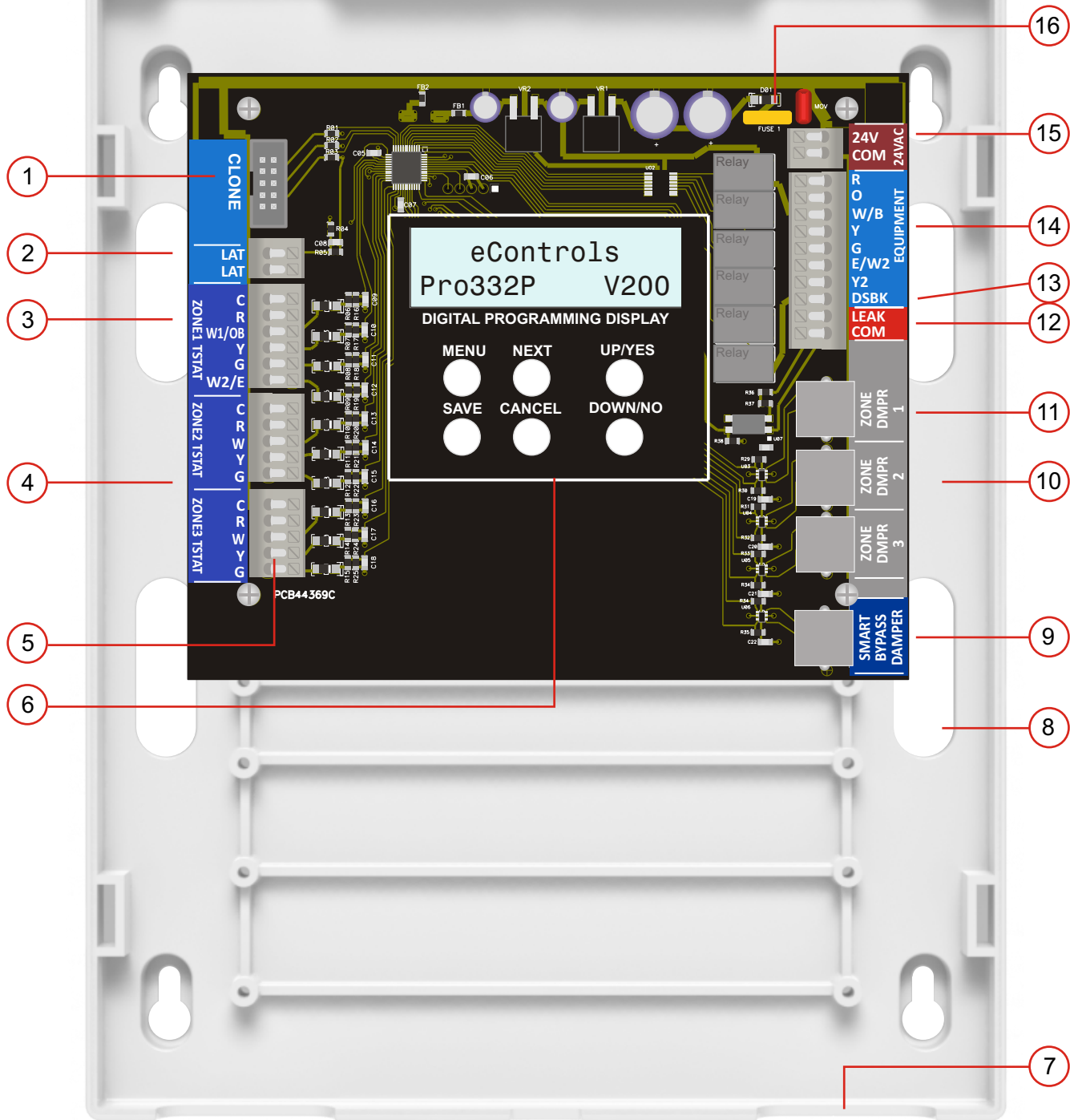
Model	Zones	Gas/Electric	Heat Pump
PD332P	3	2H/2C	2Compressor/1Aux
PD311P	3	1H/1C	NA
PD211P	2	1H/1C	NA
PD321P	3	NA	1Compressor/1Aux
PD221P	2	NA	1Compressor/1Aux

Provides the best comfort and lowest install cost.

Proudly designed, engineered
and assembled in the USA



Pro332P Zoning Panel



- | | | |
|--|--|--|
| <p>① Connector for cloning panels with same options.</p> <p>② Terminals for Leaving Air Temperature sensor for downstaging when limits are exceeded.</p> <p>③ Terminals for Zone1 heat/cool or heat pump thermostat.</p> <p>④ Terminals for Zone2 and Zone3 heat/cool thermostats.</p> <p>⑤ Terminals are push in, screwless type for easy wiring.</p> | <p>⑥ On panel, backlit, 2x16 character LCD for intuitive programming of options and displaying panel status.</p> <p>⑦ Wiring access openings at top and bottom of case.</p> <p>⑧ Wiring access openings so wiring can be run behind case.</p> <p>⑨ Connector for external, modulating bypass damper controlled by panel.</p> <p>⑩ Large channels for wiring.</p> | <p>⑪ Connectors for plug&play zone dampers.</p> <p>⑫ Terminals for equipment A2L Leak Detection output– opens all dampers.</p> <p>⑬ DSBK terminal for operating fan in low speed when only one zone is calling.</p> <p>⑭ Terminals for gas/electric or heat pump equipment.</p> <p>⑮ Terminals for 24VAC, 40VA transformer.</p> <p>⑯ Automatic reset fuse.</p> |
|--|--|--|

Automatic Bypass Control

The zoning panel provides Automatic Bypass Control using the non-calling, modulating zone damper to meet CA Title24 or using an external modulating bypass damper.

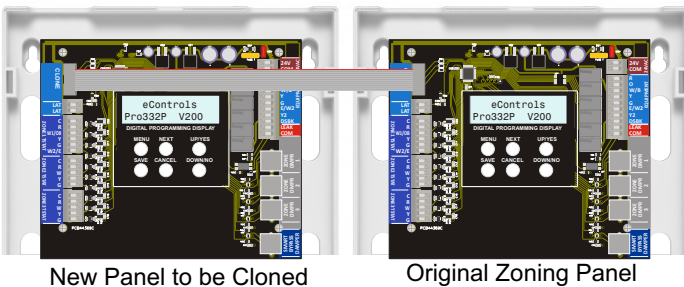
The panel automatically positions the bypass damper based on the size of the zone dampers, the bypass damper size, which zones are calling and how much extra CFM is acceptable for the calling zones set by the installer using the LCD display.

A2L Refrigerant Leak Monitor

All dampers are fully opened when a refrigerant leak is detected by the equipment and the equipment 24VAC (R) is turned off or a dedicated leak detection output is activated.

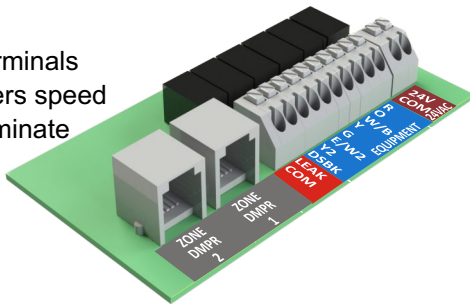
Cloning Panels

Cloning is a fast and simple way to transfer all the settings from one zoning panel to another panel in the shop or the field. Just connect the Cloning connectors on the two panels with the ribbon cable and select Cloning on the display.



Easy Wiring

Push-in, screwless terminals and Plug&Play dampers speed up installation and eliminate wiring errors.



On-Panel LCD Display

Use the preset options or set options and display the operation of the equipment including call status, zone thermostat status, zone damper position, bypass damper position and Leaving air temperature.



Modulating Dampers

Modulating dampers can be positioned in 2% steps by the panel for exact bypass control. The dampers provide twice the torque of a typical spring return damper actuator and use only 2VA when positioning and less than 1VA when holding position.



LEDs indicate when the damper is fully open or closed. Multiple dampers can be used to define a zone. Electronic motor control ensures long operating life – tested to over 1 million cycles. Cables for connecting the damper to the panel are provided with each damper.

Selecting Equipment Options

Use the factory set options or use the keys and LCD display to select the options best suited to the installation.

- Equipment Type.
- Stages of Heating and cooling.
- High and low temperature limits.
- Fan operation in gas heating.
- Number of zones being used.

Selecting Auto Bypass Options

The keys and the LCD display are used to select the bypass options and settings.

- Select Automatic Bypass using the non-calling dampers or an external modulating bypass damper.
- Select the zone damper sizes.
- Select the allowed increased CFM for the calling zones.
- Set the external bypass damper size. The panel displays the minimum bypass damper size.

Competitive Zoning Panels

The Pro300PD and Pro200PD series offers easier installation, lower cost and features not found in competitive zoning panels.

Honeywell

Models HZ221, HZ311 and HZ322

AprilAire

Models 6202, 6203, 6302 and 6303

Zone First

Models MMP2, MMP3 and MMZ3

EWC Controls

Model NCM300

Ordering Information

Pro332P Zoning Panel

3-Zone Panel with Automatic Bypass Control. Use with Gas/electric equipment with 2H/2C or Heat Pump equipment with 2-stage compressor and 1-stage auxiliary electric strip heating. O or B-type. A2L Leak monitor.

Pro311P Zoning Panel

3-Zone Panel with Automatic Bypass Control. Use with Gas/electric equipment with 1H/1C. A2L Leak monitor.

Pro211P Zoning Panel

2-Zone Panel with Automatic Bypass Control. Use with Gas/electric equipment with 1H/1C. A2L leak monitor.

Pro321P Zoning Panel

3-Zone Panel with Automatic Bypass Control. Use with Heat Pump equipment with 1-stage compressor and 1-stage auxiliary electric strip heating. O or B-type. A2L leak monitor.

Pro221P Zoning Panel

2-Zone Panel with Automatic Bypass Control. Use with Heat Pump equipment with 1-stage compressor and 1-stage auxiliary electric strip heating. O or B-type. A2L leak monitor.

Model TS2B Temperature Sensor

Leaving Air 2-Wire Temperature Sensor.



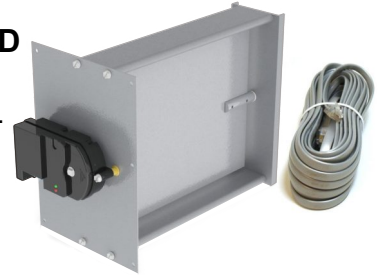
Model R80ZJ-XX

Round, Modulating, Plug&Play Sealed Damper. Includes 25' plug&play cable. Available in 6-20 inch diameters (XX).

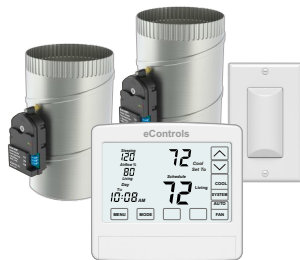


Model RT80ZJ-HHxDD

Rectangular, Modulating, Plug&Play Sealed Damper. Includes 25' plug&play cable. Available in 8 x 8 to 20 x 16. Actuator on height side (first dimension).



Other Products



ZTWD11, ZTWD21 and ZTWD21WF

Thermostat with 2-Zone automatic comfort control, Eliminates bypass, LAT sensor and separate 24VAC transformer.



ZCDC for RNC

2-Zone automatic comfort control, Eliminates bypass, LAT sensor and separate 24VAC transformer.



ZCDWL for AOR

2-Zone wireless, automatic comfort control, Eliminates bypass, LAT sensor and separate 24VAC transformer.

Where to Purchase

Available through distribution.

Contact Information:

949-916-0945

Sales@eControlsUSA.com

Visit eControlsUSA.com to see other 2-Zone Comfort Controls and Zoning Panel solutions.

Limited 5-Year Warranty

The 5-year warranty is limited to the repair or replacement of defective product due to parts failure or defective workmanship.



26072 Merit Circle #110 / Laguna Hills, CA 92653
949-916-0945 Fax 949-458-8502 www.eControlsUSA.com